



GOOD JOB
✓
GUARANTEE



○ Kara Sea

○ James Blue

○ Northern Blue



Optional add on:
Clear top coat available
in matt and gloss

GOOD JOB GUIDE

How to paint a chair

✓ 6 EASY STEPS

Got a chair that's looking a little tired? Add your own personality to your furniture with a splash of colour you love. It's easy to turn a simple piece into something special in just an afternoon. So, let's give that chair a brand-new story. And remember, if things don't go to plan, don't worry!

Paint with confidence with our Good Job Guarantee.



HOW MUCH PAINT?†

1 CHAIR

500ML

†Measurements are approximate

Still unsure?
Scan for our
paint calculator.





SHOPPING LIST

- British Paints® Clean & Protect™
Tinted to your selected British Paints® colour
- British Paints® Prep 4in1™
Primer is only required if you are painting over dark/bright colours or bare plaster
- British Paints® Furniture Paint
Protective Matt Clear or Gloss
- Paint brush
- Drop sheet
- Selley's® Sugar Soap
- Can opener
- Paint stirrer
- Tape
- Sandpaper & filler
- Mini roller, roller tray & liner



BEFORE



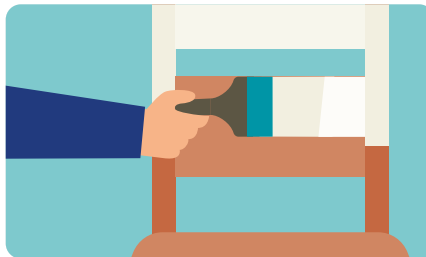
AFTER

HANDY TIP
After sanding, make sure to wipe down the chair again to remove all the dust before the first coat.



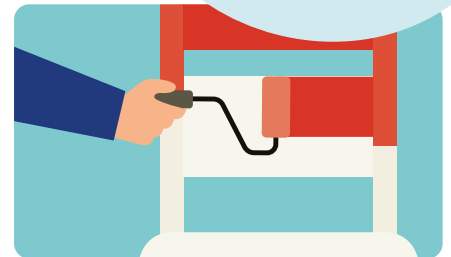
Step 1: Prep your chair

Brush away dust, loose paint or old varnish. Remove any hardware and lightly sand the surface so the new paint can stick.



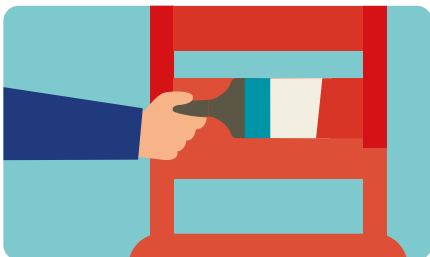
Step 2: Prime

If your chair is bare timber or a rough surface, apply British Paints® 4in1™ primer to create an even base. This helps stop stains and ensures your topcoat paints on smoothly.



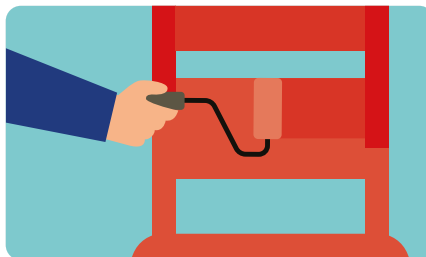
Step 3: Time to transform

Once your primer is dry, use a brush or mini roller on larger surfaces to paint your first coat of British Paints® Furniture Paint using smooth, even strokes. Make sure you cover all the hard-to-reach areas. Let it dry for around 2 hours before moving on.



Step 4: Make it pop

Apply the second coat to really make the colour pop, and to ensure full coverage. Don't forget, smooth, steady strokes will help you get that professional-looking finish.



Step 5: Add protection

Once the colour coats are dry, apply a protective clear finish like British Paints® Furniture Clear Matt Protective Finish (or gloss if you prefer). This helps your chair stay looking great for longer.



Step 6: Cure & reveal

Refer to the back of your product label for information on curing time. Be sure to avoid putting items on the chair or dragging anything across it until it's fully dry. Then place it back in your room and marvel at how good it looks.

Need a hand? Talk to our Good Job Squad today for helpful tips and advice.

Scan here to get in touch.



*British Paints, the BP device, 4 Seasons and H2O Enamel are registered trade marks. ™Clean&Protect and Prep4in1 are trade marks.
*Our Good Job Guarantee: If you make a mistake and are dissatisfied with your painting result, we will replace your paint and support you with the help and advice you need to nail that painting project – all free of charge. Your problem might be lap marks, roller marks, dissatisfaction with your British Paints colour, or uneven or inadequate coverage. The start date of the offer is 19 July 2021. This Guarantee may be discontinued by British Paints at any time.
See website www.britishtopaints.com.au/good-job-guarantee for full conditions.
Colours shown are as close as possible to actual paint colours. Please note, due to limitations of the printing process photographic images and colour swatches may not present the true colour. Always confirm your colour choice with sample pots.