



○ Costa Rica Blue

**HANDY TIP**

British Paints® Clean & Protect™ is perfect for bathrooms with an 8-year guarantee against mould growth.



# GOOD JOB GUIDE

## How to paint bathroom walls

**6 EASY STEPS**

Giving your bathroom a fresh look and feel is easier than you think! With the right paint and a little prep, you can refresh walls, brighten the space, and give it a clean, modern feel in just a day or two. Follow our simple guide to transform your bathroom, making it look like new. And remember, if things don't go to plan, don't worry!

**Paint with confidence with our Good Job Guarantee.\***



### HOW MUCH PAINT?†

**SMALL ENSUITE OR SINGLE WALL** 2L

**STANDARD BATHROOM** 4L

**LARGE BATHROOM** 6L

†Measurements are approximate

Still unsure?  
Scan for our  
paint calculator.



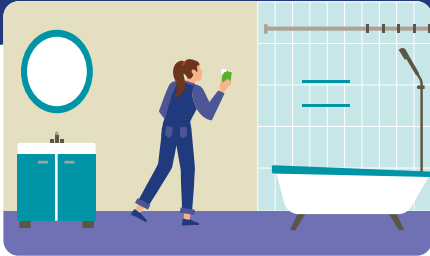


## SHOPPING LIST

- British Paints® Clean & Protect™  
Low Sheen tinted to your selected  
British Paints® colour
- British Paints® Prep 4in1™  
Primer is only required if you are painting  
over dark/bright colours or bare plaster
- Paint brush
- Drop sheet
- Selley's® Sugar Soap
- Can opener
- Paint stirrer
- Tape
- Sandpaper & filler

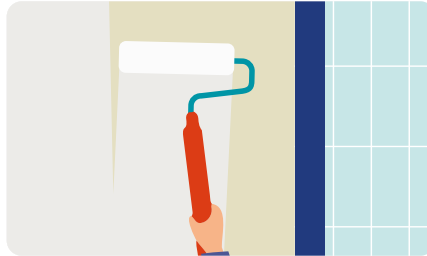


**HANDY TIP**  
If they can't be removed, cover any fixtures and fittings with plastic bags to protect them.



### Step 1: Clear, clean & prep

Remove towels, bath mats and any fixtures or fittings you can. Cover your floor, bath and shower with dropsheets. Treat any mould or mildew first, then wash the walls thoroughly and rinse well. Fill any cracks or holes, sand smooth and ensure all surfaces are completely dry.



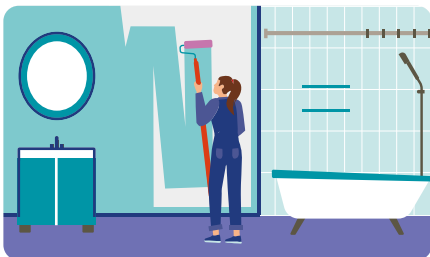
### Step 2: Tape & prime

Mask around tiles, trims, switches and ceiling edges for crisp lines. Bathrooms often need a little extra support, so apply British Paints® Prep 4in1™ to help your topcoat stick and cope with the humidity, then let the primer dry.



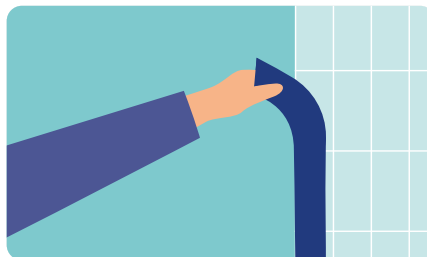
### Step 3: Cut in around edges

Now it is time to paint on your colour with British Paints® Clean & Protect™. Stir your paint well, then use a brush to cut in around the edges to help you avoid getting paint where you don't want it. This gives you neat borders and helps your roller get an even finish.



### Step 4: Roll your first coat

Use a roller to apply paint across the wall in an 'M' or zigzag motion, then finish with smooth, even strokes. This helps you avoid streaks and keeps the colour consistent.



### Step 5: Second coat & smooth finish

Once dry, apply your second coat in the same way for the perfect coverage. Remove masking tape while the paint is slightly tacky to avoid peeling or flaking, giving you sharp edges.



### Step 6: Clean up & reveal

Tidy your workspace, clean your tools and once the paint is dry, replace furniture and fittings. Then, admire your handiwork in your refreshed bathroom! You'll have peace of mind with UltraProtect™ technology, which helps protect against mould\*, mildew and bacteria to help keep that freshly painted look for longer.

Need a hand? Talk to our Good Job Squad today for helpful tips and advice.

Scan here to get in touch.



Only Available at  
**BUNNINGS**  
warehouse

\*British Paints and the BP device are registered trade marks. ™Clean&Protect and Prep4in1 are trade marks.

\*Our Good Job Guarantee: If you make a mistake and are dissatisfied with your painting result, we will replace your paint and support you with the help and advice you need to nail that painting project – all free of charge. Your problem might be lap marks, roller marks, dissatisfaction with your British Paints colour, or uneven or inadequate coverage. The start date of the offer is 19 July 2021. This Guarantee may be discontinued by British Paints at any time. \*Red and yellow bases are not mould-guaranteed.

See website [www.britishpaints.com.au/good-job-guarantee](http://www.britishpaints.com.au/good-job-guarantee) for full conditions.

Colours shown are as close as possible to actual paint colours. Please note, due to limitations of the printing process photographic images and colour swatches may not present the true colour. Always confirm your colour choice with sample pots.