



GOOD JOB
GUARANTEE



GOOD JOB GUIDE

How to paint a fence

✓ 6 EASY STEPS

A newly painted fence can lift your whole outdoor space. Whether it's bare timber, weathered boards or, just ready for a refresh, painting your fence will not only make it look sharp and keep it protected from the elements, but give your space a new look too. And remember, if things don't go to plan, don't worry!

Paint with confidence with our Good Job Guarantee.



HOW MUCH PAINT?†

FRONT FENCE 2L for two coats
1.2m high x 10m wide

MEDIUM FENCE 7L for two coats
1.8m high x 30m wide

LARGE FENCE 12L for two coats
1.8m high x 50m wide

†Measurements are approximate

Still unsure?
Scan for our
paint calculator.





SHOPPING LIST

- British Paints® Clean & Protect™
British Paints® 4 Seasons® Low Sheen tinted to your selected British Paints® or Colorbond® colour
- Optional: Oil based primer
Only required for high tannin and resin-rich timbers
- Paint brush
- Drop sheet
- Can opener
- Paint stirrer
- Tape
- Sandpaper & filler
- Optional: Spray gun

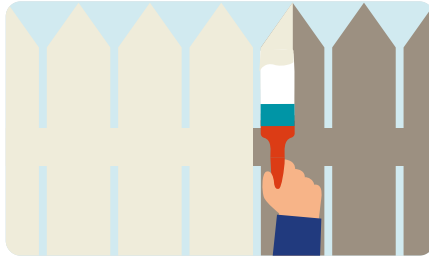


HANDY TIP
Save time by using a spray gun to paint your fence!



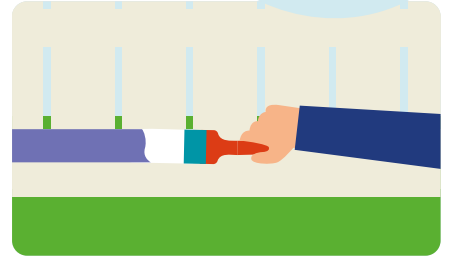
Step 1: Prep your fence

If it's new, brush off dust and loose timber fibres. For older fences, scrub away mould using bleach or anti-mould solution, rinse and allow to dry completely. Hose off dust and lay drop sheets to protect garden beds, paths and grass.



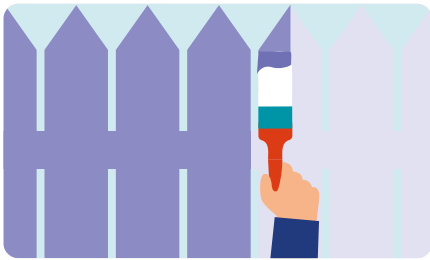
Step 2: Prime for perfection

If your fence is a resin-rich or high tannin timber, we recommend starting with an oil based primer. This helps stop stains coming through and gives your topcoat a consistent base to stick to.



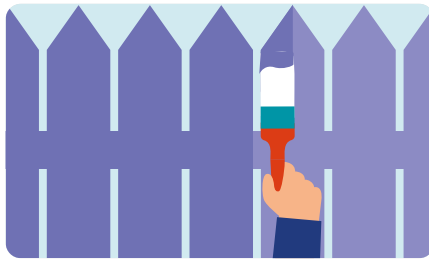
Step 3: Tackle the tricky areas

Start with British Paints® 4 Seasons®, painting the bottom rail along the ground, then move on to the hard-to-reach valleys. Whether you're brushing or spraying, doing these tricky parts first makes everything else much easier.



Step 4: Paint the main boards

Work vertically, a few boards at a time, keeping your strokes long and steady for an even finish. Allow at least 2 hours between coats, and longer if it's cool or humid.



Step 5: Second coat for full coverage

Apply your second coat to build rich colour and protect the timber. This coat helps create a professional, smooth finish that will last longer and handle the elements.



Step 6: Clean up & step back

Check for any missed patches and touch them up. Clean your brushes or spray equipment, pack away the drop sheets and enjoy the new look of your outdoor space.

Need a hand? Talk to our Good Job Squad today for helpful tips and advice.

Scan here to get in touch.



*British Paints, the BP device and 4 Seasons are registered trade marks.™Prep4in1 is a trade mark. Colorbond and Colorbond Colours are registered trade marks of BlueScope Steel Limited.

*Our Good Job Guarantee: If you make a mistake and are dissatisfied with your painting result, we will replace your paint and support you with the help and advice you need to nail that painting project – all free of charge. Your problem might be lap marks, roller marks, dissatisfaction with your British Paints colour, or uneven or inadequate coverage. The start date of the offer is 19 July 2021. This Guarantee may be discontinued by British Paints at any time.

See website www.britishpaints.com.au/good-job-guarantee for full conditions.

Colours shown are as close as possible to actual paint colours. Please note, due to limitations of the printing process photographic images and colour swatches may not present the true colour. Always confirm your colour choice with sample pots.

