



GOOD JOB
GUARANTEE



GOOD JOB GUIDE

How to paint a front door

✓ 6 EASY STEPS

Your front door is the first thing people see, and a fresh coat of paint can make a big statement, making your home pop. Whether it's wood, weathered or just outdated, this guide can help you give your front door a clean, welcoming finish that lasts. And remember, if things don't go to plan, don't worry!

Paint with confidence with our Good Job Guarantee.



HOW MUCH PAINT?†

STANDARD DOOR 1L

†Measurements are approximate

Still unsure?

Scan for our paint calculator.





SHOPPING LIST

- British Paints® H2O Enamel®
Gloss tinted to your selected
British Paints® colour
- British Paints® Prep 4in1™
Primer is only required if you are painting
over dark/bright colours or bare plaster
- Paint brush
- Drop sheet
- Selley's® Sugar Soap
- Can opener
- Paint stirrer
- Tape
- Sandpaper & filler
- Mini roller
- Roller tray & liner



HANDY TIP
You'll need to wait at least 24 hours before flipping your door and painting the other side to avoid damaging your new colour!



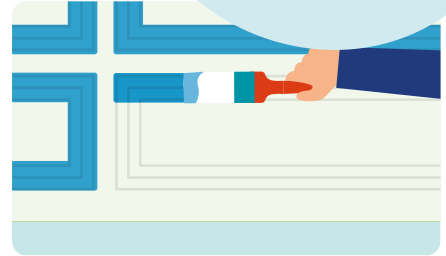
Step 1: Prep for painting

If you can, remove the door and lay it flat on sawhorses (or two sturdy chairs). If removal isn't an option, tape around the hinges and ensure it sits ajar. Remove any handles, knockers or numbers, and give the surface a clean with sugar soap to remove dirt. Fill any cracks, lightly sand to smooth and remove old glossy paint.



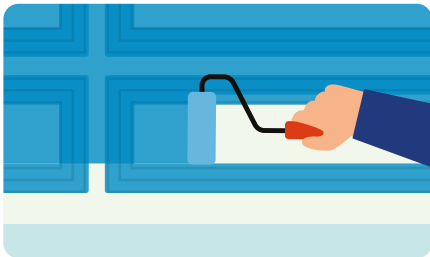
Step 2: Prime for a pro finish

If the door is bare timber or stained, apply British Paints® Prep 4in1™. It acts as a primer, sealer and stain blocker in one, giving you the best base for your topcoat.



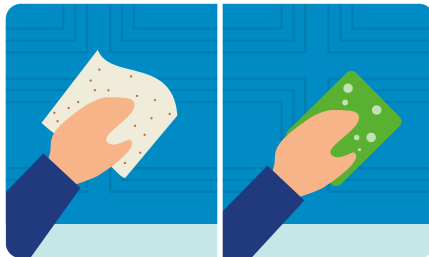
Step 3: Start painting the edges

Now it is time to paint on your colour with British Paints® H2O Enamel. Stir your paint well, then use a brush to paint around the outer edges, corners and any panels. This makes rolling the larger areas cleaner and easier.



Step 4: Roll your first coat

Use a mini roller or a quality brush to paint the main surface in long, straight strokes. Work quickly and steadily to avoid lap marks, and lay off the final strokes by painting in the same downward direction for a smooth finish.



Step 5: Recoat for a smooth finish

Once the first coat is dry, very lightly sand your door to remove any imperfections, wipe away the dust, and apply your second coat using the same method. This gives you a strong, even colour.



Step 6: Rehang & admire

Allow the door to fully dry before reattaching the hardware and hanging it back up. Then step back and enjoy your fresh new look.

Need a hand? Talk to our Good Job Squad today for helpful tips and advice.

Scan here to get in touch.



*British Paints, the BP device and H2O Enamel are registered trade marks. **Prep4in1 is a trade mark. Colorbond and Colorbond Colours are registered trade marks of BlueScope Steel Limited.

*Our Good Job Guarantee: If you make a mistake and are dissatisfied with your painting result, we will replace your paint and support you with the help and advice you need to nail that painting project – all free of charge. Your problem might be lap marks, roller marks, dissatisfaction with your British Paints colour, or uneven or inadequate coverage. The start date of the offer is 19 July 2021. This Guarantee may be discontinued by British Paints at any time.

See website www.britishtopaints.com.au/good-job-guarantee for full conditions.

Colours shown are as close as possible to actual paint colours. Please note, due to limitations of the printing process photographic images and colour swatches may not present the true colour. Always confirm your colour choice with sample pots.

Only Available at
BUNNINGS
warehouse

